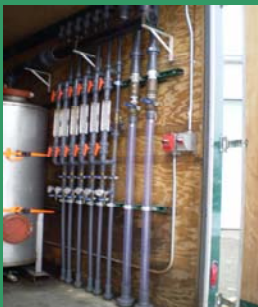




## Dual Phase Extraction System Liquid Ring pump/Oilwater Separator/Air Stripper Bag filter/Carbon adsorbers Unit# 7

### Environmental Treatment Specialists



- General Specifications: 20 GPM water treatment  
500 ACFM @28" Hg
- Trailer: 8ft wide x 32 ft long x 10 ft height  
14,000 pound double axle trailer
- Main Equipment: 40 Hp oil sealed Liquid Ring pump  
120 gallon knock out tank w/clean out port  
20 GPM XP ¾ Hp Moyno pump  
20 GPM Oil/Water Separator  
55 gallon product collection drum  
20 GPM XP ½ Hp water transfer pump  
20 GPM Air stripper with blower  
20 GPM XP 1Hp transfer pump  
2 LCO8 Rosedale Bag Filters  
2-800 pound granular activated carbon adsorbers  
Erdco Flow Meter (air)  
Totalizing water flow meter  
Vacuum & Pressure gauges, sample ports
- Trailer Specifications: XP Lights, heater and fan in equipment room  
Components in equipment room wired for XP  
Non XP lights and control panel in control room  
Outside light
- Control Panel: PLC (Program Logic Controller)  
Telemetry fault communication  
HAO switch – all components  
Emergency stop button  
Fault lights and reset  
GFI
- Inlet Hose Connection: 8 - Male camlock 2" inlet fittings (8 well manifold including site glass, flow meter (6 lines), vacuum gauge, flow control valve)
- Outlet Hose Connection: 4" air stack for LRP (18 Ft. high)  
Vapors can be plumbed for off-gas treatment  
2" male camlock water discharge
- Power Requirements: 230 Volt, 3 phase, 200 Amp services  
(Main fused disconnect located outside trailer)

#### ProAct Services Corporation

Corp Office: 231-843-2711  
Gulf Coast: 210-862-6467  
or 713-202-6351  
Midwest Office: 231-342-1115  
East Coast Office: 203-262-1200

[www.proact-usa.com](http://www.proact-usa.com)

Texas • Colorado • Michigan • New Jersey • Connecticut